

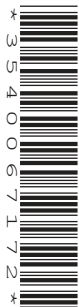
CANDIDATE
NAME

CENTRE
NUMBER

| | | | | |
|--|--|--|--|--|
| | | | | |
|--|--|--|--|--|

CANDIDATE
NUMBER

| | | | |
|--|--|--|--|
| | | | |
|--|--|--|--|



BIOLOGY

0970/32

Paper 3 Theory (Core)

October/November 2018

1 hour 15 minutes

Candidates answer on the Question Paper.

No Additional Materials are required.

READ THESE INSTRUCTIONS FIRST

Write your Centre number, candidate number and name on all the work you hand in.

Write in dark blue or black pen.

You may use an HB pencil for any diagrams or graphs.

Do not use staples, paper clips, glue or correction fluid.

DO **NOT** WRITE IN ANY BARCODES.

Answer **all** questions.

Electronic calculators may be used.

You may lose marks if you do not show your working or if you do not use appropriate units.

At the end of the examination, fasten all your work securely together.

The number of marks is given in brackets [] at the end of each question or part question.

This document consists of **18** printed pages and **2** blank pages.

1 The boxes on the left contain the names of processes from the carbon cycle.

The boxes on the right contain some descriptions of processes.

Draw **one** straight line from each process to link the process to its description.

An example has been done for you.

| process | description |
|----------------|--|
| combustion | breakdown of dead or waste organic matter |
| decomposition | burning |
| feeding | chemical reactions in cells that break down nutrient molecules to release energy |
| fossilisation | conversion of the remains of organisms into fossils |
| photosynthesis | ingestion of organic material |
| respiration | maintenance of a constant internal environment |
| | manufacture of carbohydrates from raw materials using energy from light |

[5]

[Total: 5]

- 2 Some students investigated the conditions needed for the germination of maize seeds. They used maize seeds from a packet of seeds they had purchased in a shop.

Three dishes were used, each containing cotton wool and the same number of maize seeds, as shown in Fig. 2.1.

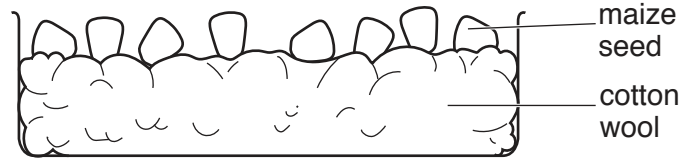


Fig. 2.1

Table 2.1 shows the conditions provided for each dish.

Table 2.1

| conditions | dish | | |
|--------------------------|-------|-------|------|
| | A | B | C |
| treatment of cotton wool | damp | dry | damp |
| temperature / °C | 20 | 20 | 3 |
| light or dark | light | light | dark |

The seeds were left for five days and then observed.

The results are shown in Table 2.2.

Table 2.2

| dish | results |
|------|----------------------|
| A | all seeds germinated |
| B | no seeds germinated |
| C | no seeds germinated |

- (a) (i) Explain why the seeds in dishes B and C did not germinate.

Dish B

.....

Dish C

.....

[2]

- (ii) In a second investigation, maize seeds were placed in a dish containing damp cotton wool.

This dish was left in the dark for five days at 20 °C.

Predict and explain the results.

prediction

.....

explanation

.....

.....

[2]

- (b) A student gathered 70 maize seeds from plants growing in a field. The seeds were placed in dishes containing damp cotton wool.

After five days only 64 seeds had germinated.

- (i) Calculate the percentage of seeds that germinated.

Show your working.

Give your answer to the nearest whole number.

.....%

[2]

- (ii) Suggest a reason why some of the seeds did not germinate.

.....

.....

.....[1]

[Total: 7]

3 This question is about biological molecules.

Choose words or phrases from the list to complete the sentences.

Each word or phrase may be used once, more than once, or not at all.

| | | | |
|------------------|---------------------|-----------------------|---------------------|
| calcium | carbon | carbon dioxide | carbohydrate |
| cellulose | chloroplasts | fat | glycerol |
| glycogen | iron | methane | nitrogen |
| oxygen | protein | starch | |

Fats are composed of the elements , hydrogen and only. All proteins contain these three elements and the element

Glucose is a type of

Animals store excess glucose as in the liver.

Plants store excess glucose as Plants also convert glucose to which is used to make cell walls.

[7]

[Total: 7]

4 (a) Fig. 4.1 shows teeth in a human skull.



Fig. 4.1

Add label lines and labels to Fig. 4.1 to identify an incisor tooth and a molar tooth. [2]

(b) Fig. 4.2 represents the teeth of two adults, **D** and **E**. It shows the numbers of the types of teeth and the number of decayed teeth.

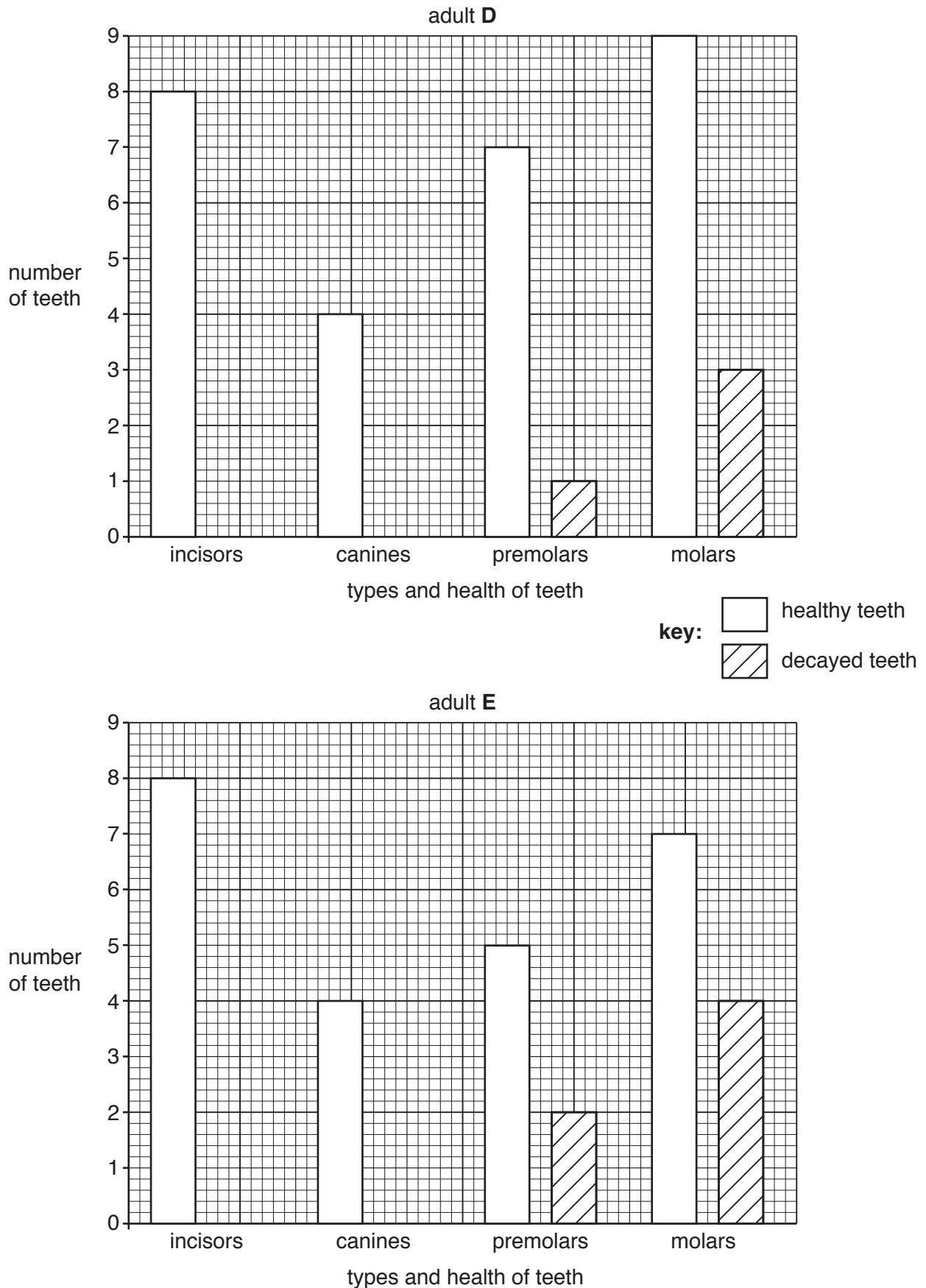


Fig. 4.2

A healthy adult human has **32** teeth.

(i) State the number of teeth **E** has lost.
.....[1]

(ii) State the number of decayed teeth present in **D**.
.....[1]

(iii) Suggest **two** reasons why **D** and **E** have different numbers of decayed teeth.
1
.....
2
.....[2]

(iv) Identify the type of tooth that decays most frequently in Fig. 4.2.
.....[1]

(c) Describe how bacteria are involved in tooth decay.
.....
.....
.....
.....
.....[2]

[Total: 9]

5 (a) Fig. 5.1 shows a diagram of part of the alimentary canal and associated structures.

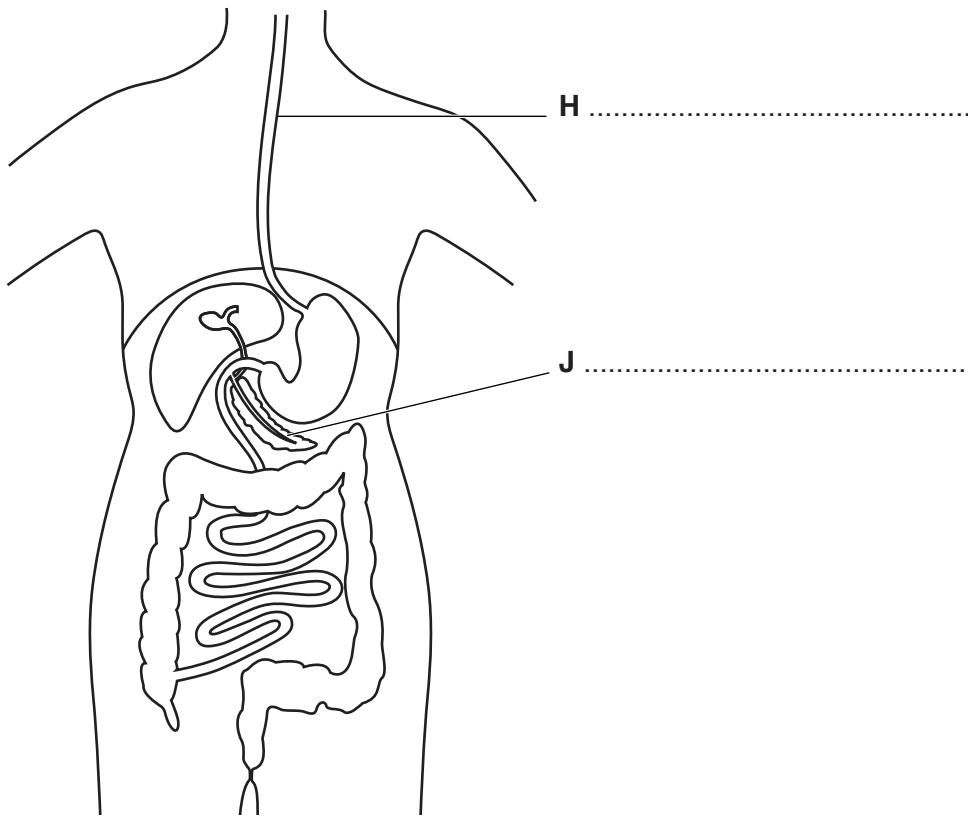


Fig. 5.1

(i) State the names of the structures labelled **H** and **J**.

Write your answers on Fig. 5.1.

[2]

(ii) On Fig. 5.1 draw label lines with letters to show:

N where faeces are stored

P where **most** water is absorbed

R where digested food is absorbed.

[3]

(b) (i) State the name of the process that is defined as the movement of digested food molecules into the cells of the body where they are used, becoming part of the cells.

.....[1]

(ii) State the name of the process that removes faeces from the body.

.....[1]

6 Fig. 6.1 shows the sequence of events that occur in sexual reproduction.

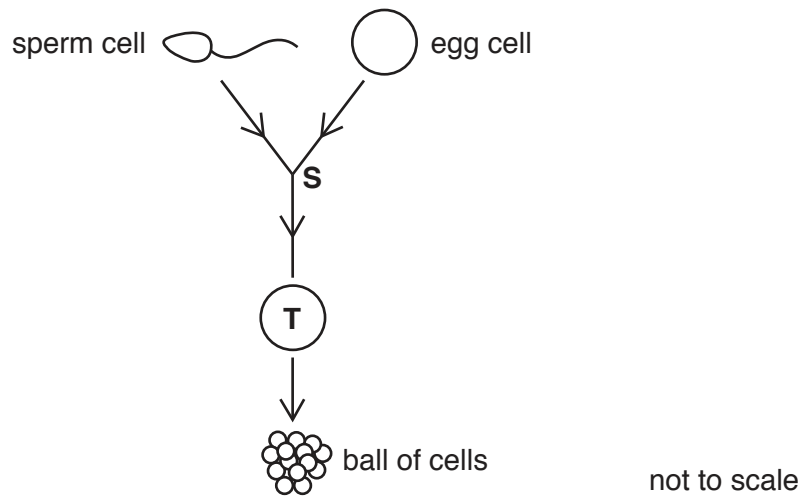


Fig. 6.1

- (a) (i) State the name of cell **T** in Fig. 6.1.
[1]
- (ii) State the name of the process that takes place at **S** to form cell **T** in Fig. 6.1.
[1]
- (iii) State where in the human body process **S** takes place.
[1]

- (b) (i) Some humans have the ability to roll their tongues and some cannot roll their tongues. This characteristic is controlled by genes.

Fig. 6.2 shows two boys: boy **A** cannot roll his tongue and boy **B** can roll his tongue.



Fig. 6.2

The allele for tongue rolling (**T**) is dominant to the allele for non-tongue rolling (**t**).

Fig. 6.3 shows a family tree for this characteristic. Individual **1** and his partner are both heterozygous for tongue rolling.

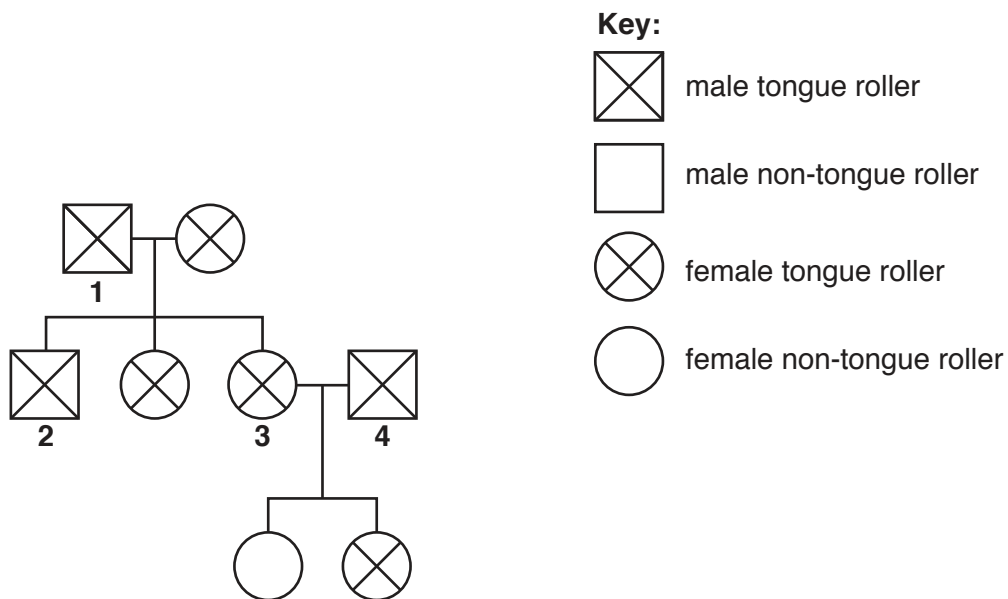


Fig 6.3

Complete Table 6.1 by inserting the genotypes of the numbered individuals in Fig. 6.3.

Table 6.1

| individual | genotype |
|------------|----------|
| 1 | |
| 3 | |
| 4 | |

[3]

- (ii) Individual 2 in Fig. 6.3 is heterozygous for tongue rolling. He marries a woman who cannot roll her tongue.

State all of the possible genotypes of their children and predict the ratio of phenotypes for their children.

possible offspring genotypes:

ratio of phenotypes:

[2]

[Total: 8]

7 (a) Complete the sentences by placing appropriate words in the spaces to give a definition of transpiration.

In transpiration water is lost from the of a plant.

The water from the surface of the cells and water vapour is produced.

The water vapour moves by out of the plant through pores called

[5]

(b) Complete Table 7.1 by

- stating **two** environmental conditions that affect the rate of transpiration
- stating how a **decrease** in each environmental condition affects the rate of transpiration.

Table 7.1

| environmental condition | effect of a decrease on the rate of transpiration |
|-------------------------|---|
| | |
| | |

[4]

[Total: 9]

8 Fig. 8.1 shows a photomicrograph of some red blood cells.

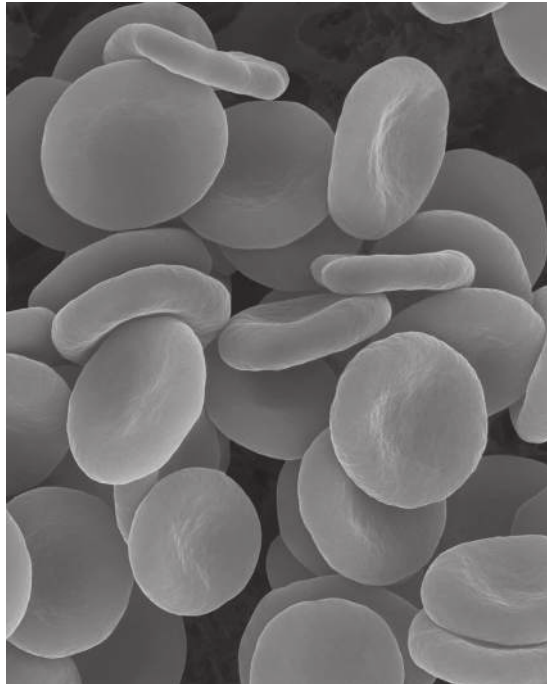


Fig. 8.1

(a) (i) State the function of a red blood cell.

.....[1]

(ii) State **two** ways in which a red blood cell is adapted to its function.

1

.....

2

.....

[2]

(b) State the name of a component of blood that is responsible for clotting.

.....[1]

(c) (i) State the name of the disease caused by a blockage in the arteries supplying the heart muscle.

.....[1]

(ii) List **three** risk factors that increase the risk of a blockage in the arteries supplying the heart muscle.

1

2

3

[3]

(d) Fig. 8.2 is a diagram of the circulatory system. The blood vessels are labelled with letters.

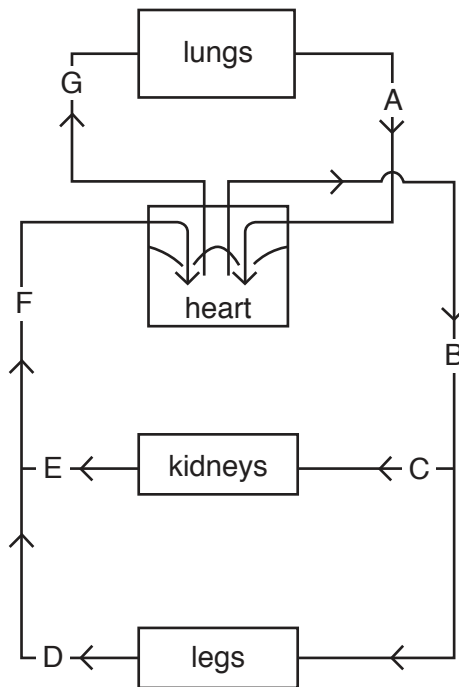


Fig 8.2

Complete Table 8.1 by identifying the letter of the named blood vessels in Fig. 8.2.

Table 8.1

| name of blood vessel | letter |
|----------------------|--------|
| aorta | |
| pulmonary artery | |
| renal vein | |
| vena cava | |

[4]

9 (a) Some animals are farmed intensively.

Describe the negative impacts to an ecosystem of intensive livestock production.

.....
.....
.....
.....
.....
.....
.....
.....
.....
..... [4]

(b) State why fertilisers, herbicides and insecticides are used in farming.

fertilisers
.....
herbicides
.....
insecticides
..... [3]

(c) Fertilisers, herbicides and insecticides can all pollute water.

List **two** other sources of water pollution.

1
2 [2]

[Total: 9]

Permission to reproduce items where third-party owned material protected by copyright is included has been sought and cleared where possible. Every reasonable effort has been made by the publisher (UCLES) to trace copyright holders, but if any items requiring clearance have unwittingly been included, the publisher will be pleased to make amends at the earliest possible opportunity.

To avoid the issue of disclosure of answer-related information to candidates, all copyright acknowledgements are reproduced online in the Cambridge International Examinations Copyright Acknowledgements Booklet. This is produced for each series of examinations and is freely available to download at www.cie.org.uk after the live examination series.

Cambridge International Examinations is part of the Cambridge Assessment Group. Cambridge Assessment is the brand name of University of Cambridge Local Examinations Syndicate (UCLES), which is itself a department of the University of Cambridge.